



:
:
:
:
:



Test Report

(EVERLIGHT ELECTRONICS CO., LTD.)

6-8 (NO. 6-8, ZHONGHUA RD., SHULIN DIST., NEW TAIPEI CITY 23860, TAIWAN)

(Test Requested) : (1) RoHS 2011/65/EU Annex II (EU) 2015/863, DBP, BBP, DEHP, DIBP (As specified by client, with reference to RoHS 2011/65/EU Annex II and amending Directive (EU) 2015/863 to determine Cadmium, Lead, Mercury, Cr(VI), PBBs, PBDEs, DBP, BBP, DEHP, DIBP contents in the submitted sample(s).)

(2) PAHs (As specified by client, to test PAHs and other item(s).)

(Conclusion) : (1) BBP, DEHP, DIBP, DBP, RoHS 2011/65/EU Annex II (EU) 2015/863 (Based on the performed tests on submitted sample(s), the test results of Cadmium, Lead, Mercury, Cr(VI), PBBs, PBDEs, DBP, BBP, DEHP, DIBP comply with the limits as set by RoHS Directive (EU) 2015/863 amending Annex II to Directive 2011/65/EU.)

(2) PAHs 3 (AfPS) GS (Based upon the performed tests on the submitted sample(s), the test results of PAHs (15 items) comply with the limits of PAHs requirement (Category 3) Other consumer products as set by German Committee on Product Safety (AfPS) GS PAHs.)

(Test Part Description)

No.1 : HIGH POWER XI3030 CW SERIES

(Test Results)

(Test Items)	(Method)	(Unit)	MDL	(Result)	(Limit)
				No.1	
(Cd) (Cadmium (Cd))	IEC 62321-5: 2013 (With reference to IEC 62321-5: 2013, analysis was performed by ICP-OES.)	mg/kg	2	n.d.	100
(Pb) (Lead (Pb))		mg/kg	2	n.d.	1000

Test Report

(EVERLIGHT ELECTRONICS CO., LTD.)

6-8 (NO. 6-8, ZHONGHUA RD., SHULIN DIST., NEW TAIPEI CITY 23860, TAIWAN)

(Test Items)	(Method)	(Unit)	MDL	(Result)	(Limit)
				No.1	
(Hg) (Mercury (Hg))	IEC 62321-4: 2013+ AMD1: 2017 (With reference to IEC 62321-4: 2013+ AMD1: 2017, analysis was performed by ICP-OES.)	mg/kg	2	n.d.	1000
Cr(VI) (Hexavalent Chromium Cr(VI))	IEC 62321-7-2: 2017 - (With reference to IEC 62321-7-2: 2017, analysis was performed by UV-VIS.)	mg/kg	8	n.d.	1000
(Monobromobiphenyl)	IEC 62321-6: 2015 / (With reference to IEC 62321-6: 2015, analysis was performed by GC/MS.)	mg/kg	5	n.d.	-
(Dibromobiphenyl)		mg/kg	5	n.d.	-
(Tribromobiphenyl)		mg/kg	5	n.d.	-
(Tetrabromobiphenyl)		mg/kg	5	n.d.	-
(Pentabromobiphenyl)		mg/kg	5	n.d.	-
(Hexabromobiphenyl)		mg/kg	5	n.d.	-
(Heptabromobiphenyl)		mg/kg	5	n.d.	-
(Octabromobiphenyl)		mg/kg	5	n.d.	-
(Nonabromobiphenyl)		mg/kg	5	n.d.	-
(Decabromobiphenyl)		mg/kg	5	n.d.	-
(Sum of PBBs)		mg/kg	-	n.d.	1000
(Monobromodiphenyl ether)		mg/kg	5	n.d.	-
(Dibromodiphenyl ether)		mg/kg	5	n.d.	-
(Tribromodiphenyl ether)		mg/kg	5	n.d.	-
(Tetrabromodiphenyl ether)		mg/kg	5	n.d.	-
(Pentabromodiphenyl ether)		mg/kg	5	n.d.	-
(Hexabromodiphenyl ether)		mg/kg	5	n.d.	-
(Heptabromodiphenyl ether)		mg/kg	5	n.d.	-
(Octabromodiphenyl ether)		mg/kg	5	n.d.	-
(Nonabromodiphenyl ether)		mg/kg	5	n.d.	-
(Decabromodiphenyl ether)	mg/kg	5	n.d.	-	
(Sum of PBDEs)	mg/kg	-	n.d.	1000	

Test Report

(EVERLIGHT ELECTRONICS CO., LTD.)

6-8 (NO. 6-8, ZHONGHUA RD., SHULIN DIST., NEW TAIPEI CITY 23860, TAIWAN)

(Test Items)	(Method)	(Unit)	MDL	(Result)	(Limit)
				No.1	
(BBP) (Butyl benzyl phthalate (BBP))	IEC 62321-8: 2017 / (With reference to IEC 62321-8: 2017, analysis was performed by GC/MS.)	mg/kg	50	n.d.	1000
(DBP) (Dibutyl phthalate (DBP))	IEC 62321-8: 2017 / (With reference to IEC 62321-8: 2017, analysis was performed by GC/MS.)	mg/kg	50	n.d.	1000
(2-ethylhexyl) phthalate (DEHP))	IEC 62321-8: 2017 / (With reference to IEC 62321-8: 2017, analysis was performed by GC/MS.)	mg/kg	50	n.d.	1000
(DIBP) (Diisobutyl phthalate (DIBP))	IEC 62321-8: 2017 / (With reference to IEC 62321-8: 2017, analysis was performed by GC/MS.)	mg/kg	50	n.d.	1000
(DIDP) (Diisodecyl phthalate (DIDP)) (CAS No.: 26761-40-0, 68515-49-1)	IEC 62321-8: 2017 / (With reference to IEC 62321-8: 2017, analysis was performed by GC/MS.)	mg/kg	50	n.d.	-
(DINP) (Diisononyl phthalate (DINP)) (CAS No.: 28553-12-0, 68515-48-0)	IEC 62321-8: 2017 / (With reference to IEC 62321-8: 2017, analysis was performed by GC/MS.)	mg/kg	50	n.d.	-
(DNOP) (Di-n-octyl phthalate (DNOP)) (CAS No.: 117-84-0)	IEC 62321-8: 2017 / (With reference to IEC 62321-8: 2017, analysis was performed by GC/MS.)	mg/kg	50	n.d.	-
(DNPP) (Di-n-pentyl phthalate (DNPP)) (CAS No.: 131-18-0)	IEC 62321-8: 2017 / (With reference to IEC 62321-8: 2017, analysis was performed by GC/MS.)	mg/kg	50	n.d.	-
(DNHP) (Di-n-hexyl phthalate (DNHP)) (CAS No.: 84-75-3)	IEC 62321-8: 2017 / (With reference to IEC 62321-8: 2017, analysis was performed by GC/MS.)	mg/kg	50	n.d.	-
(2-methoxyethyl) phthalate (DMEP)) (CAS No.: 117-82-8)	IEC 62321-8: 2017 / (With reference to IEC 62321-8: 2017, analysis was performed by GC/MS.)	mg/kg	50	n.d.	-
(DMP) (Dimethyl phthalate (DMP)) (CAS No.: 131-11-3)	IEC 62321-8: 2017 / (With reference to IEC 62321-8: 2017, analysis was performed by GC/MS.)	mg/kg	50	n.d.	-

Test Report

(EVERLIGHT ELECTRONICS CO., LTD.)

6-8 (NO. 6-8, ZHONGHUA RD., SHULIN DIST., NEW TAIPEI CITY 23860, TAIWAN)

(Test Items)	(Method)	(Unit)	MDL	(Result)	(Limit)
(DIOP) (Diisooctyl phthalate (DIOP)) (CAS No.: 27554-26-3)	IEC 62321-8: 2017 / (With reference to IEC 62321-8: 2017, analysis was performed by GC/MS.)	mg/kg	50	n.d.	-
(DNNP) (Di-n-nonyl phthalate (DNNP)) (CAS No.: 84-76-4)	IEC 62321-8: 2017 / (With reference to IEC 62321-8: 2017, analysis was performed by GC/MS.)	mg/kg	50	n.d.	-
(HBCDD) (- HBCDD, - HBCDD, - HBCDD) (Hexabromocyclododecane)	IEC 62321: 2008 / (With reference to IEC 62321: 2008, analysis was performed by GC/MS.)	mg/kg	5	n.d.	-
		mg/kg	50	n.d.	-
	BS EN 14582: 2016 (With reference to BS EN 14582: 2016, analysis was performed by IC.)	mg/kg	50	n.d.	-
		mg/kg	50	n.d.	-
(I) (Iodine (I)) (CAS No.: 14362-44-8)		mg/kg	50	n.d.	-
(PFOS and its salts) (CAS No.: 1763-23-1 and its salts)	CEN/TS 15968: 2010 (With reference to CEN/TS 15968: 2010, analysis was performed by LC/MS/MS.)	mg/kg	0.01	n.d.	-
	CEN/TS 15968: 2010 (With reference to CEN/TS 15968: 2010, analysis was performed by LC/MS/MS.)	mg/kg	0.01	n.d.	-
(Be) (Beryllium (Be)) (CAS No.: 7440-41-7)	US EPA 3052: 1996 (With reference to US EPA 3052: 1996, analysis was performed by ICP-OES.)	mg/kg	2	n.d.	-



(No.): ETR23605623

(Date): 12-Jul-2023

(Page): 7 of 17

Test Report

(EVERLIGHT ELECTRONICS CO., LTD.)

6-8 (NO. 6-8, ZHONGHUA RD., SHULIN DIST., NEW TAIPEI CITY 23860, TAIWAN)

(Note)

1. mg/kg = ppm 0.1wt% = 0.1% = 1000ppm

2. MDL = Method Detection Limit ()

3. n.d. = Not Detected (); MDL / Less than MDL

4. "-" = Not Regulated ()

5. (PFOS and its salts including) :

CAS No.: 1763-23-1, 2795-39-3, 29457-72-5, 29081-56-9, 70225-14-8, 56773-42-3, 251099-16-8, 307-35-7, 91036-71-4, 4021-47-0 and others.

6. (PFOA and its salts including) :

CAS No.: 335-67-1, 335-95-5, 2395-00-8, 335-93-3, 335-66-0, 3825-26-1 and others.

7. ILAC-G8:09/2019 (w=0)

(Unless otherwise stated, the decision rule for conformity reporting is based on Binary Statement for Simple Acceptance Rule (w=0) stated in ILAC-G8:09/2019. According to this rule, the judgement of conformity is based on the comparing test results with limits.)

Test Report

(EVERLIGHT ELECTRONICS CO., LTD.)

6-8 (NO. 6-8, ZHONGHUA RD., SHULIN DIST., NEW TAIPEI CITY 23860, TAIWAN)

Remark

(AfPS): GS PAHs

AfPS (German commission for Product Safety): GS PAHs requirements

(Parameter)	1 (Category 1)	2 (Category 2)		3 (Category 3)	
	(Materials intended to be placed in the mouth, or materials in toys (Directive 2009/48/EC) or articles for children up to 3 years of age with intended long-term skin contact (> 30 seconds))	(Materials that are not in Category 1, with intended or foreseeable long-term skin contact (> 30 seconds) or short-term repetitive contact with the skin)		(Materials not covered by Category 1 or 2, with intended or foreseeable short-term skin contact (< 30 seconds))	
		a. (Use by children under 14)	b. (Other consumer products)	a. (Use by children under 14)	b. (Other consumer products)
Naphthalene	< 1	< 2		< 10	
Phenanthrene	< 1 Sum	< 5 Sum	< 10 Sum	< 20 Sum	< 50 Sum
Anthracene					
Fluoranthene					
Pyrene					
Benzo[a]anthracene					
Chrysene	< 0.2	< 0.2	< 0.5	< 0.5	< 1
Benzo[b]fluoranthene	< 0.2	< 0.2	< 0.5	< 0.5	< 1
Benzo[j]fluoranthene	< 0.2	< 0.2	< 0.5	< 0.5	< 1
Benzo[k]fluoranthene	< 0.2	< 0.2	< 0.5	< 0.5	< 1
Benzo[a]pyrene	< 0.2	< 0.2	< 0.5	< 0.5	< 1
Benzo[e]pyrene	< 0.2	< 0.2	< 0.5	< 0.5	< 1
Indeno[1,2,3-c,d] pyrene	< 0.2	< 0.2	< 0.5	< 0.5	< 1
Dibenzo[a,h]anthracene	< 0.2	< 0.2	< 0.5	< 0.5	< 1
Benzo[g,h,i]perylene	< 0.2	< 0.2	< 0.5	< 0.5	< 1
15 PAH (Sum of 15 PAH)	< 1	< 5	< 10	< 20	< 50

(Unit) mg/kg

Test Report

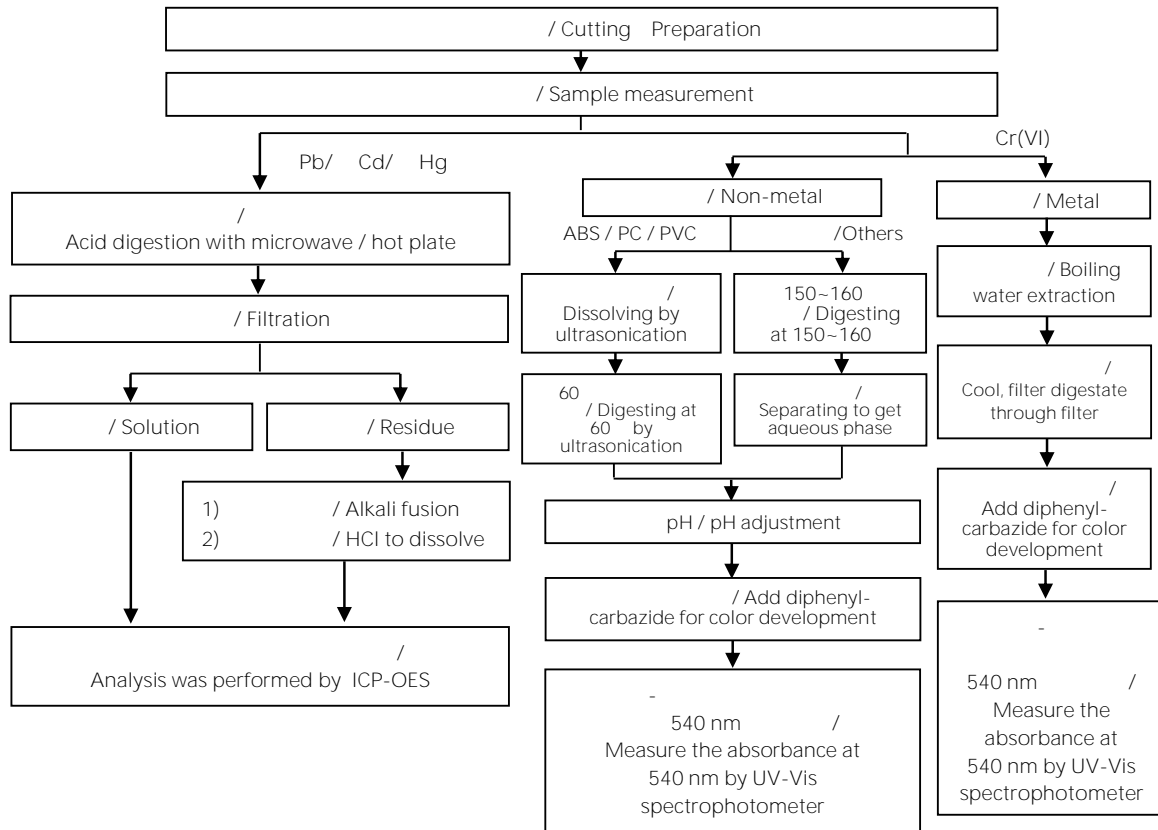
(EVERLIGHT ELECTRONICS CO., LTD.)

6-8 (NO. 6-8, ZHONGHUA RD., SHULIN DIST., NEW TAIPEI CITY 23860, TAIWAN)

/ Analytical flow chart of heavy metal

These samples were dissolved totally by pre-conditioning method according to below flow chart.

Cr⁶⁺ test method excluded



Test Report

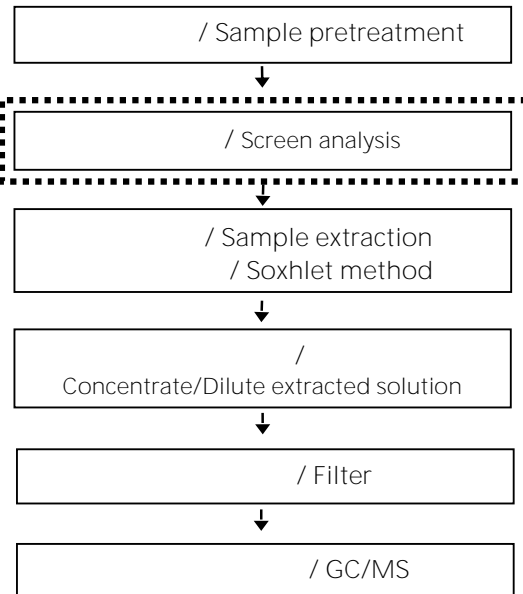
(EVERLIGHT ELECTRONICS CO., LTD.)
6-8 (NO. 6-8, ZHONGHUA RD., SHULIN DIST., NEW TAIPEI CITY 23860, TAIWAN)

/ Analytical flow chart - PBBs/PBDEs

/ First testing process 

/ Optional screen process 

/ Confirmation process 



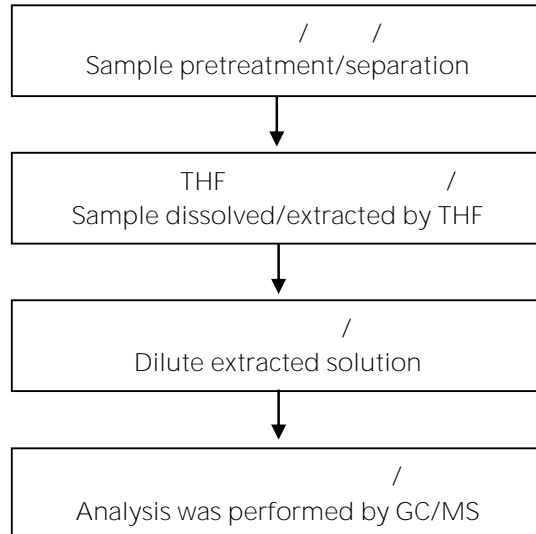
Test Report

(EVERLIGHT ELECTRONICS CO., LTD.)

6-8 (NO. 6-8, ZHONGHUA RD., SHULIN DIST., NEW TAIPEI CITY 23860, TAIWAN)

/ Analytical flow chart - Phthalate

/Test method: IEC 62321-8

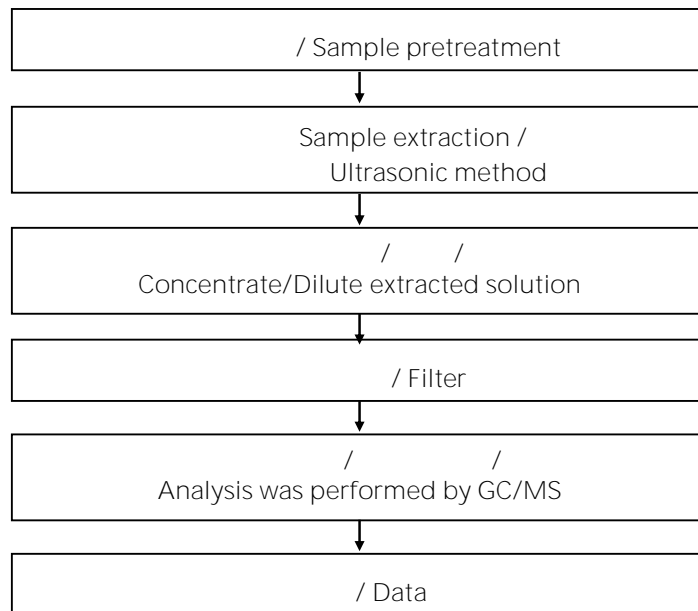


Test Report

(EVERLIGHT ELECTRONICS CO., LTD.)

6-8 (NO. 6-8, ZHONGHUA RD., SHULIN DIST., NEW TAIPEI CITY 23860, TAIWAN)

/ Analytical flow chart - HBCDD

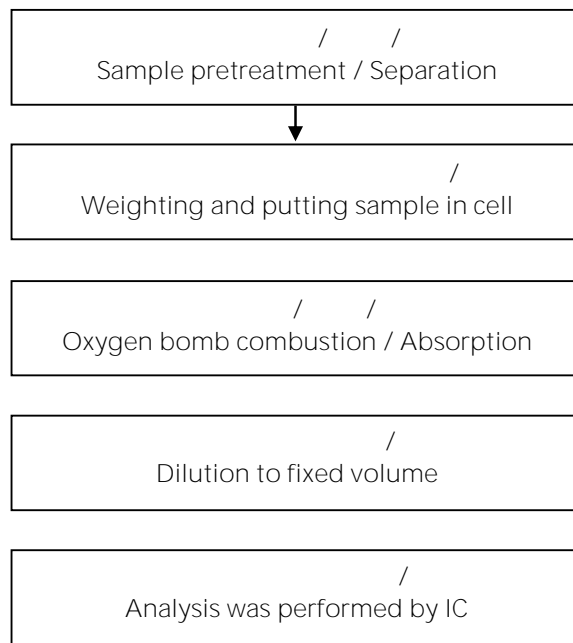


Test Report

(EVERLIGHT ELECTRONICS CO., LTD.)

6-8 (NO. 6-8, ZHONGHUA RD., SHULIN DIST., NEW TAIPEI CITY 23860, TAIWAN)

/ Analytical flow chart - Halogen





Test Report

(Page): 14 of 17

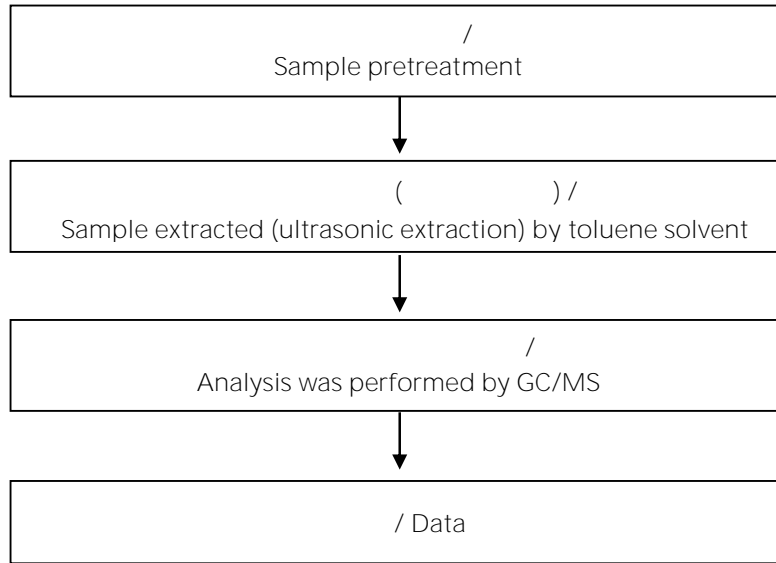


Test Report

(EVERLIGHT ELECTRONICS CO., LTD.)

6-8 (NO. 6-8, ZHONGHUA RD., SHULIN DIST., NEW TAIPEI CITY 23860, TAIWAN)

Analytical flow chart - PAHs (Polycyclic Aromatic Hydrocarbons)



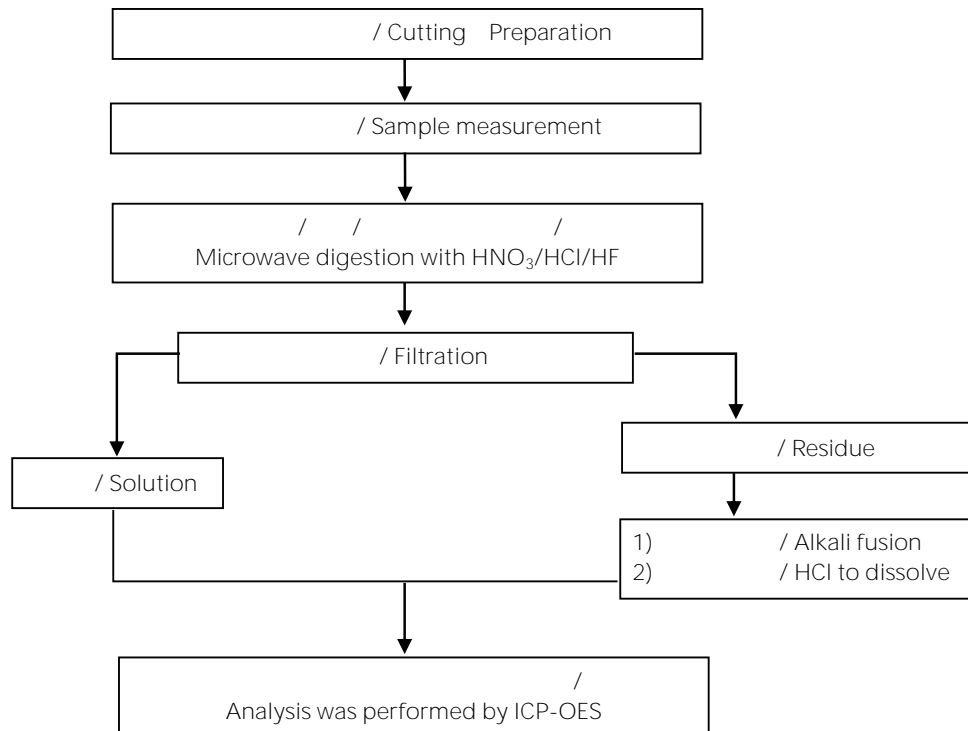
Test Report

(EVERLIGHT ELECTRONICS CO., LTD.)
6-8 (NO. 6-8, ZHONGHUA RD., SHULIN DIST., NEW TAIPEI CITY 23860, TAIWAN)

() / Analytical flow chart of elements (Heavy metal included)

These samples were dissolved totally by pre-conditioning method according to below flow chart.

/Reference method US EPA 3051A US EPA 3052



* US EPA 3051A

/ US EPA 3051A method does not add HF.

Test Report

(EVERLIGHT ELECTRONICS CO., LTD.)

6-8 (NO. 6-8, ZHONGHUA RD., SHULIN DIST., NEW TAIPEI CITY 23860, TAIWAN)

*

/

*

(The tested sample / part is marked by an arrow if it's shown on the photo.)

ETR23605623



**

(End of Report) **